

Councillor Loretta Baker, Mayor of the City of Maitland, the Councillors of Maitland City Council together with Brigette Uren, Cultural Director of Maitland Regional Art Gallery warmly invite you to

PASSCHENDAELE & OTHER WORLDS

A celebration of 5 exhibitions & 50+ complementary events & workshops.


SATURDAY 28 OCTOBER 2017

Meet artists, historians, health workers & dancers in a celebration of the role of creativity in Passchendaele & other worlds real and imagined. Great food, Pourhouse Craft Beers and Tyrrell's Wines from 3pm!

**ENTRY IS FREE! EVERYONE IS WELCOME!
BECOME A MEMBER & JOIN THE MRAG FAMILY!**

OPENING PROGRAM

- 10.00am** Visit our Gallery Shop to support local artists!
- 3.00 - 5.00pm** *Share The Journey: Journeys Creative Connections* in the Gallery gardens
- 3.00pm** Refreshments on arrival
- 3.30pm** *Soldiers Home* performance by dance students from Maitland High School followed by Mayor's Welcome
- 3.45pm** On Photography in Battle with exhibition curators: Kim Blunt, Joe Eisenberg and Janis Wilton
- 4.00pm** Bruce Roxburgh in conversation
- 4.15pm** Alison McDonald in conversation
- 4.30pm** Conversation with *Operation Art* Project Officer Lisa van den Dolder
- 4.45pm** Bliss Cavanagh on creating sensory art spaces

 This activity is accessible and inclusive. MRAG is committed to providing access for all to attend our events.



MAITLAND REGIONAL ART GALLERY

230 High St Maitland NSW 2320 | 02 4934 9859 | mrag.org.au

Cover: Frank Hurley, *Over the top/A hop over* (detail), c 1918, photographic digital print, dimensions variable. Image courtesy of Australian War Memorial [E05988B]. 1. Frank Hurley, *Four Australian troops walking over duckboards in the waterlogged fields Flanders, October 1917* (detail), Hurley Negative Collection, The National Library of Australia [nla.obj-160182782]. 2. Bruce Roxburgh, *Sifting Green* (detail), 2015, coloured pencil, silverpoint, 97 x 76cm. 3. Alison McDonald, *Trickle* (detail), 2013, individually hand cast & reduced recycled, plastic lids & wire, 100 x 60 x 1cm, image courtesy Alison McDonald. 4. Holly Bennett, *Uplifting* (detail), Narara Valley High School, Year 10. 5. Bliss Cavanagh, *Rainbow Furry Circles* (detail), mixed media, wire, LED lighting.



MRAG is a proud service of Maitland City Council. Maitland Regional Art Gallery is supported by the NSW Government through Create NSW.

MRAG SPONSORS



EXHIBITION PARTNERS



Passchendaele: photography and the moving image in battle



Wanton, Wild & Unimagined is a travelling exhibition organised by Umbrella Studio contemporary arts, toured by Museums & Galleries Queensland. This project has been assisted by the Australian Government's Visions of Australia program; and supported by the Visual Arts and Craft Strategy, an initiative of the Australian, state and territory governments.





EXHIBITIONS

PASSCHENDAELE: photography and the moving image in battle

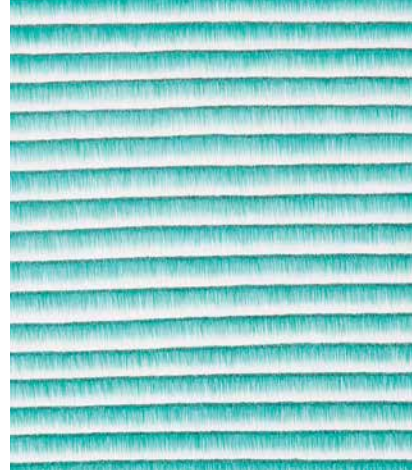
This MRAG exhibition explores the use of photography and film during the First World War. It focuses on images taken by the official Australian war photographers, Frank Hurley and Hubert Wilkins. There are also studio portraits of local men who served, and some of whom died, during the First Battle of Passchendaele on 12 October 1917.

The exhibition also includes controversial composite photographs made by Hurley, the film *Fighting in Flanders*, papers and ephemera of local men as well as vintage prints that use and re-use official photographs.

Items in the exhibition come from the Australian War Memorial, the National Library of Australia and the State Library of New South Wales.

14 October 2017 - 28 January 2018

1.



2.

TAKING A CLOSER LOOK

Bruce Roxburgh

Close observation along tidelines and mudflats, in bushland and the garden, inspire the intricate texture and patterns of Bruce Roxburgh's works on paper. Bruce seeks to make drawings which stimulate a tactile visual sensation using mediums such as egg tempera, silverpoint, coloured pencil and charcoal to carry these meditative patterns to a point of stillness.

28 October 2017 - 28 January 2018



3.

WANTON, WILD & UNIMAGINED

Alison McDonald

This playful exhibition of sculpted recycled plastics uses multiples of individual recycled materials to create new forms and sits at the junction of sculpture, consumer culture and environmental concern.

9 September - 3 December 2017

OPERATION ART

Artworks created for young people in hospital by Kindergarten - Year 10 students from NSW schools

Every year children from Kindergarten to Year 10 attending schools across New South Wales are invited to participate in Operation Art, an initiative of The Children's Hospital at Westmead in association with the New South Wales Department of Education.

16 September - 19 November 2017



4.

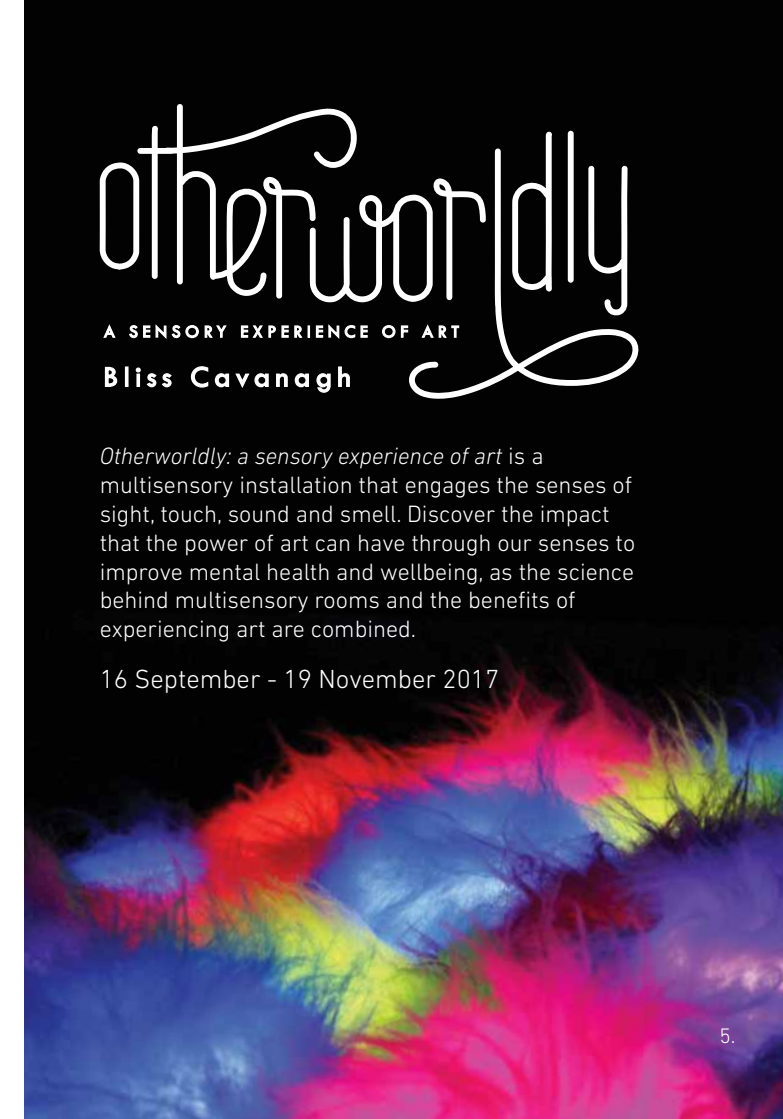
otherworldly

A SENSORY EXPERIENCE OF ART

Bliss Cavanagh

Otherworldly: a sensory experience of art is a multisensory installation that engages the senses of sight, touch, sound and smell. Discover the impact that the power of art can have through our senses to improve mental health and wellbeing, as the science behind multisensory rooms and the benefits of experiencing art are combined.

16 September - 19 November 2017



5.

PUBLIC PROGRAMS

SHARE THE JOURNEY
Journeys Creative Connections
MRAG welcomes everyone to see, hear and experience this Arts Recovery program in action.

Supported by Flourish Australia, Ability Links and After Care.
Saturday 28 October, 3 - 5pm
In the Gallery gardens **FREE**

SPECIAL FREE ART SUNDAY
with special guest artist
Alison McDonald
Create Your Own Triffids
with up-cycled PET bottles.

Sunday 29 October
11am - 1pm **FREE**

OPERATION ART
Presentation to Maitland Hospital

At each *Operation Art* exhibition a separate group of artworks is presented to a local public hospital. This year 7 artworks by students from Maitland - Central Coast schools will be presented to Maitland Hospital.

Wednesday 8 November
3.30 - 4.30pm **FREE**

PASSCHENDAELE:
photography and the moving image in battle
Remembrance Day
Saturday 11 November
2pm **FREE**

OTHERWORLDLY
The effects of experiencing a sensory-art space to support health

Join Bliss Cavanagh as she details her art practice creating sensory art spaces, followed by a Q&A session in her MRAG exhibition *Otherworldly: a sensory experience of art*.

Sunday 19 November
11am - 12noon **FREE**

DISCOVER MORE OF LIONEL'S PLACE

Sensory Packs available in Lionel's Place and at the front desk

