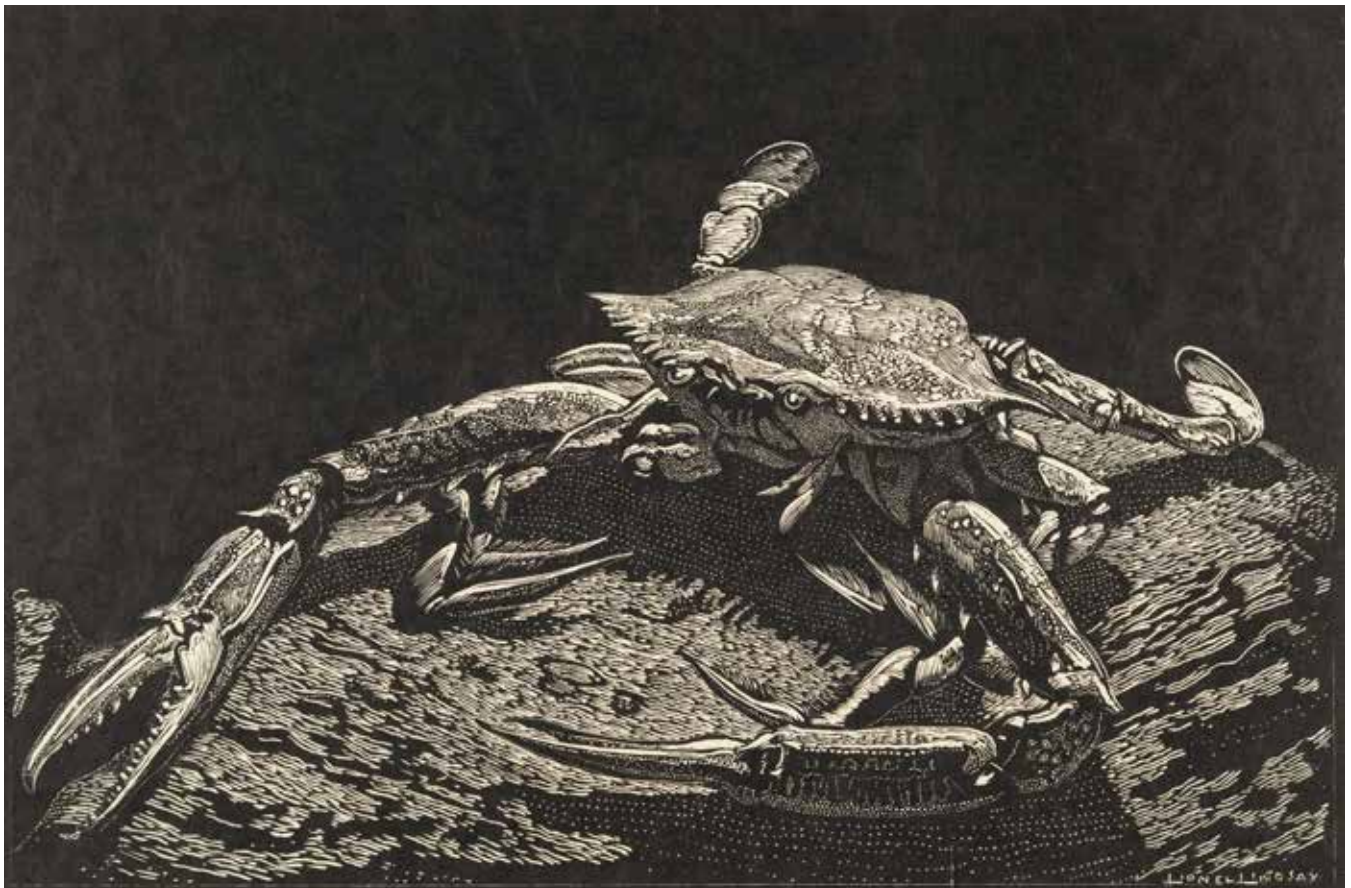


A MAITLAND REGIONAL ART GALLERY TOURING EXHIBITION

LIONEL'S PLACE



LIONEL . LINDSAY. *from the Maitland Regional Art Gallery Collection*



Lionel Lindsay, *The Crab*, 1931, Wood engraving, printed in black ink on paper, 14.4 x 21.6cm



CONTACT: CHERYL FARRELL, Collection Management Curator, MRAG

Maitland Regional Art Gallery PO Box 220 Maitland NSW 2320 Phone : (02) 4934 9856 | Fax: (02) 4933 1657 | Email: cherylf@maitland.nsw.gov.au



A MAITLAND REGIONAL ART GALLERY TOURING EXHIBITION

LIONEL'S PLACE



LIONEL. LINDSAY.



*from the Maitland Regional
Art Gallery Collection*



All artworks and woodblocks by Lionel Lindsay.
Donated to the Maitland Regional Art Gallery Collection under the
Australian Government's Cultural Gifts Program by Max and Nola Tegel in 2016.
© the Estate of Lionel Lindsay. By permission of the National Library of Australia.



Maitland Regional Art Gallery is a service of Maitland City Council and supported by the NSW Government through Create NSW.



EXPRESSION OF INTEREST FORM

EXHIBITION AVAILABLE FROM JANUARY 2020 TO DECEMBER 2023

Name of venue	
Venue contact name	
Venue address	
Postal address	
Telephone	
Email	
ABN	
<i>LIONEL'S PLACE: LIONEL LINDSAY FROM THE MAITLAND REGIONAL ART GALLERY COLLECTION</i>	<p>PREFERENCE 1 DATES : from to</p> <p>PREFERENCE 2 DATES : from to</p>
Cost	\$3000 plus transport
Name	
Signature	
Date	

PLEASE RETURN TO:



CONTACT: CHERYL FARRELL, Collection Management Curator, MRAG

Maitland Regional Art Gallery PO Box 220 Maitland NSW 2320

Phone : (02) 4934 9856 | Fax: (02) 4933 1657 | Email: cherylf@maitland.nsw.gov.au



ABOUT THE EXHIBITION

Lionel's Place consists of 136 framed art works and features Lionel Lindsay's finest etchings, wood engravings and watercolours. These works on paper are rich in visual texture, and depict scenes from abroad and closer to home, exotic and domestic animals and birds, and the lushness of gardens, floral abundance and portraiture.

This exhibition also includes three finely carved woodblocks and the prints made from those blocks, housed in a purpose built, secure shelf. Also included are three objects used by Lionel Lindsay as subject matter in his watercolours and still life depictions.

THE EXHIBITION IS ENHANCED BY MULTIPLE LEVELS OF ACCESSIBILITY AND INTERPRETATION INCLUDING:

- **EXHIBITION CATALOGUE** - an eighty page colour catalogue, which includes an essay on Lionel Lindsay's life and work by historian, academic and Lionel Lindsay specialist Joanna Mendelssohn. MAPDA - shortlist exhibition catalogue award
- **LIONEL'S PLACE STORYBOOK** - a fifty four page colour storybook which introduces a younger audience to the artwork of Lionel Lindsay. MAPDA Winner - Children's Book
- **ARTCARDS** - twelve 'See-Make-Do-Take Home' cards providing an educational resource that relate directly to the artworks in the exhibition and prompt activities that can be completed within the gallery space or at home.
- **MOBILE APP** - a downloadable Mobile App which enables exhibition visitors to discover more about selected works in the exhibition.
- **DISCOVERY BAGS** - ten bespoke tote bags designed by an art therapist. The bags include sensory objects and instruction booklet that assist visitors to engage further with the exhibition using all senses. Can be used for general visitation but also designed to extend the engagement by art and dementia program participants and people with specific sensory needs.

PUBLIC PROGRAM OPPORTUNITIES INCLUDE:

- **PRINTMAKING WORKSHOPS** lead by local printmaking educators,
- **STORYTIME** sessions,
- **LIONEL LINDSAY LECTURE** by catalogue essay writer Joanna Mendelssohn, (dependent upon personal availability and expenses being covered).

THE TOURING EXHIBITION PACKAGE INCLUDES:

- **FULL BRANDING** with templates for invitations, floorsheets (floorsheet template can be altered to suit each venue's layout and printable in-house) and wall vinyls (wall vinyl templates will be in a format suitable to send to sign suppliers - each venue to source).
- **TOURING MANUAL** with instructions for installation, packaging and transport.
- **INSURANCE.**

2018 MUSEUMS & GALLERIES NATIONAL AWARDS (MAGNA)

Highly Commended:
Temporary or Travelling Exhibition

2018 MUSEUMS AUSTRALASIA MULTIMEDIA & PUBLICATION DESIGN AWARDS (MAPDA)

Winner:
Children's Book
Highly Commended:
Exhibition Branding
Shortlisted:
Exhibition Catalogue



ABOUT LIONEL LINDSAY



Lionel Lindsay, *The Jester*, 1923, wood engraving,
printed in black ink on paper, 14.5 x 9.6cm.

Lionel Lindsay was born in Creswick, Victoria in 1874 and died in Wahroongah, NSW in 1961. Lindsay was one of ten children, five of whom became professional artists - including his younger brother Norman Lindsay. After spending 22 years as a cartoonist and illustrator for newspapers and magazines Lionel Lindsay became a full-time artist. He became a successful and prolific printmaker which funded his passion for his work and travel.

His extensive travels across Spain, Italy, North Africa and India provided the inspiration for his etchings and watercolours, while his abundant garden at home informed his finely crafted wood engravings of flowers and birds. Lionel Lindsay was an artist who honed his skills in etching and wood engraving so finely that by 1927 he was hailed as the most internationally successful Australian printmaker of all time.

The works in the exhibition *Lionel's Place* cover his artistic practice from 1910 until 1950 and encompass all the themes that Lindsay explored over his career including: landscapes from abroad; Australian imagery including Sydney streets, laconic swagmen and portraits of literary personalities such as Henry Lawson; mythical and domestic gardens; still life depictions of flowers and fruit and vegetables; and a menagerie of birds and animals.

EXHIBITION FEEDBACK

This exhibition was on display at MRAG from April 2017 to April 2018 and was enjoyed by more than 69000 visitors of all ages, with many repeat visits.

“Lionel’s Place is a fantastic exhibition to introduce a younger generation to the awesomeness that is Lionel Lindsay! His insanely intricate and delicate prints are a joy to inspect up close—they enable the viewer/student to really appreciate the immense concentration and focus used by Lionel to produce his images. Reactions to *Lionel’s Place* from students have already proved positive, they are in awe of the works beautiful minute detail, something they seldom get a chance to see on a screen!” Art tutor Vanessa Evans.



Entry panel in Lionel’s Place exhibition space.

VISITORS BOOK ENTRIES

“The Lionel Lindsay’s are amazing. Learnt a lot about woodblocks etc.”

“Love the Lionels!”

“Finally Fantastic Lindsays”

“Lionel Lindsay – fabulous”



EXHIBITION DETAILS

ORGANISED BY	Maitland Regional Art Gallery
TOURED BY	Maitland Regional Art Gallery
TOUR AVAILABLE	January 2020 - December 2023
RUNNING METRES	136 artworks covers approximately 53 running metres as salon hang (including spacing)
CATALOGUES	The exhibition is supported by an award winning 54 page story book and 80 page catalogue, published by MRAG.
SUPPORT MATERIAL	Full design package templates, 12 Artcards, Mobile App, Discovery Bags. Greeting card box set of 12 cards (for retail opportunities).
PACKAGING	Soft packed
INSTALLATION	approximately 3 days with 4 people
COST	\$3000 plus GST (excluding transport)
INSURANCE	included in cost



CONTACT: CHERYL FARRELL, Collection Management Curator, MRAG

Maitland Regional Art Gallery PO Box 220 Maitland NSW 2320

Phone : (02) 4934 9856 | Fax: (02) 4933 1657 | Email: cherylf@maitland.nsw.gov.au

CATALOGUE, STORY BOOK AND ART CARDS



Art Cards, Story book and catalogue.



Selected spreads from *Lionel's Place* Catalogue.



Selected spreads from *Lionel's Place* Story book.

DISCOVERY BAG AND GREETING CARD BOX SET



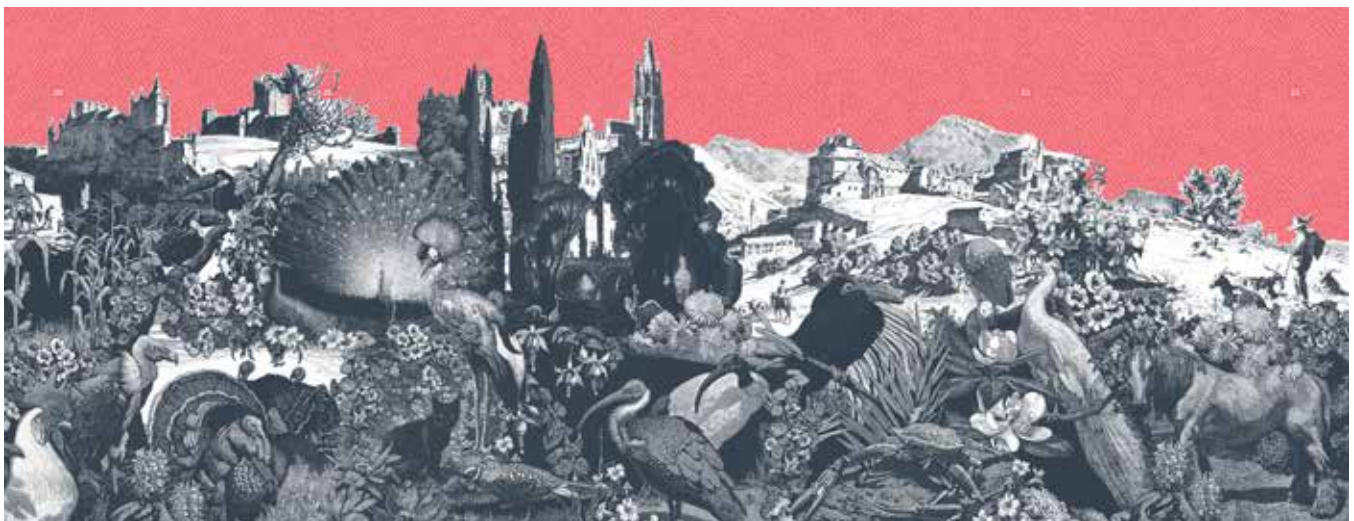
Detail of clear holographic foil on publication covers.



Discovery bag sensory pack.



Greeting card box set.



Fold out montage included in Story book.

EXHIBITION



EXHIBITION



ARTWORKS [SELECTION]



1.



2.



3.



4.

5.

6.

Lionel Lindsay, 1. *St. Mary's*, 1922, wood engraving, printed in black ink on paper, 7.2 x 5.3cm. 2. *Loquats*, 1923, wood engraving, printed in black ink on paper, 7.5 x 7.1cm. 3. *Goat and Banksia (Banksia Tree)*, 1924, wood engraving, printed in black ink on paper, 8.6 x 10cm. 4. *St. Mary's*, 1922, wood block, 7.2 x 5.2 x 2.3cm. 5. *Goat and Banksia (Banksia Tree)*, 1924, wood block, 8.5 x 9.9 x 2cm. 6. *Loquats*, 1923, wood block, 7.5 x 7.0 x 2.2cm.

ARTWORKS [SELECTION]



7.



10.



11.



8.



12.



9.



13.

Lionel Lindsay, 7. *Basket of Fruit (Fruit Piece, The Fruit Basket)*, 1936, wood engraving, printed in black ink on paper, 10.4 x 12.9cm.
 8. *Red Cactus*, 1939, wood engraving, printed in black ink on paper, 14.3 x 15cm. 9. *Untitled (Flower & Tankard)*, N.D. wood engraving, printed in black ink on paper, 7.4 x 7.3cm. 10. *Pears & Grapes*, 1925, wood engraving, printed in black ink on paper, 10.1 x 14.5cm.
 11. *Camellias*, 1931, wood engraving, printed in black ink on paper, 10.8 x 14.6cm. 12. *Zinnias*, 1924, wood engraving, printed in black ink on paper, 10.2 x 12.5cm. 13. *Asters*, c.1936, wood engraving, printed in black ink on paper, 10.3 x 14.6cm.

ARTWORKS [SELECTION]



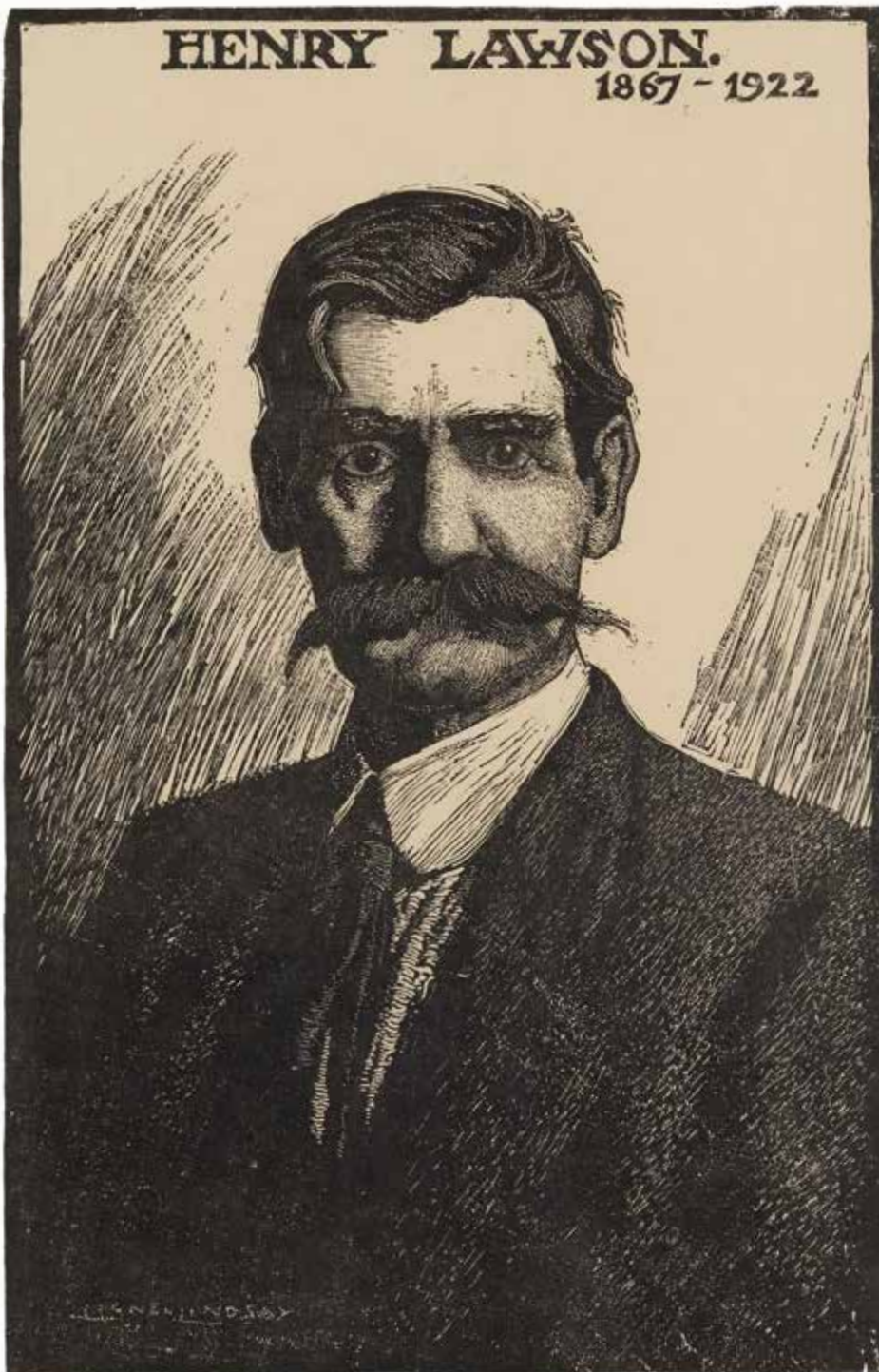
Lionel Lindsay (top left) *Hornbill*, 1932, wood engraving, printed in black ink on paper, 14 x 14cm.
(lower left) *The Night Heron*, 1935, wood engraving, printed in black ink on paper, 13.4 x 13.4cm.
(right) *Crested Crane*, 1936, wood engraving, printed in black ink on paper, 20.1 x 9.2cm.

ARTWORKS [SELECTION]



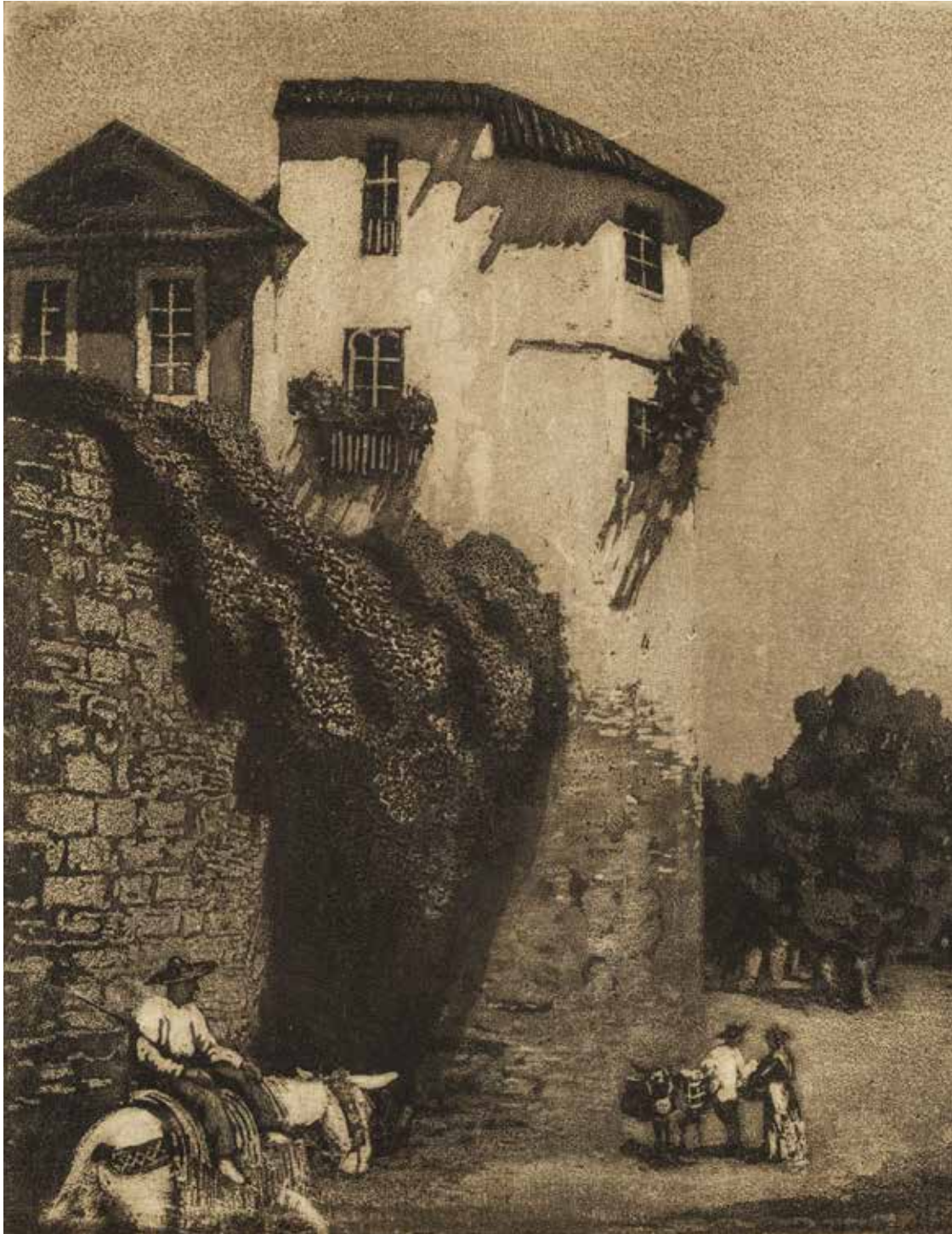
Lionel Lindsay, *Varanasi India*, c.1930, watercolour on paper, 27.5 x 38.5cm.

ARTWORKS [SELECTION]



Lionel Lindsay, *Henry Lawson*, 1922, wood engraving, printed in black ink on paper, 23.9 x 15.4cm.

ARTWORKS [SELECTION]



Lionel Lindsay, *The house on the wall, Cordova*, 1923, spirit aquatint, in black on paper, 18.5 x 15.7cm.

ARTWORKS [SELECTION]



Lionel Lindsay (top left) *The Little Balcony*, 1921, etching, in black ink on paper, 10.4 x 5.9cm.
(lower left) *A Courtyard, Segovia*, 1929, etching, printed in black ink on paper, 25.2 x 17.6cm.
(right) *Santa Cruz, Toledo*, 1945, etching, printed in black ink on paper, 25.2 x 17.6cm.



ARTWORKS [SELECTION]



Lionel Lindsay, *Old Antequera, Andalusia, Spain, 1929*, drypoint etching, printed in black ink on paper, 22.5 x 30cm.





EXPRESSION OF INTEREST FORM

EXHIBITION AVAILABLE FROM JANUARY 2020 TO DECEMBER 2023

Name of venue	
Venue contact name	
Venue address	
Postal address	
Telephone	
Email	
ABN	
<i>LIONEL'S PLACE: LIONEL LINDSAY FROM THE MAITLAND REGIONAL ART GALLERY COLLECTION</i>	<p>PREFERENCE 1 DATES : from _____ to _____</p> <p>PREFERENCE 2 DATES : from _____ to _____</p>
Cost	\$3000 plus transport
Name	
Signature	
Date	

PLEASE RETURN TO:



CONTACT: CHERYL FARRELL, Collection Management Curator, MRAG

Maitland Regional Art Gallery PO Box 220 Maitland NSW 2320

Phone : (02) 4934 9856 | Fax: (02) 4933 1657 | Email: cherylf@maitland.nsw.gov.au

Lionel Lindsay, (left) *Syrian Goat & Rhododendrons* (detail), 1933, wood engraving, printed in black ink on paper, 17 x 15.3cm.
(overleaf) *Repose* (detail), 1938, wood engraving, printed in black ink on paper, 22.7 x 15cm.

