



VENUE HIRE

THE ART FACTORY

MAITLAND
REGIONAL
ART GALLERY



MRAG.ORG.AU

230 High St Maitland NSW 2320 | 02 4934 9859
artgallery@maitland.nsw.gov.au | mrage.org.au

VENUE HIRE THE ART FACTORY



ABOUT

Maitland Regional Art Gallery houses two workshop spaces that are equipped with tables, chairs and a basin. The spaces are designed for small to medium-sized groups undertaking practical art-making or other creative activities. These two workshop spaces are available for venue hire when not in use for Gallery programmed activities. The cost does not include materials.

GALLERY SPACE

SPACE 1

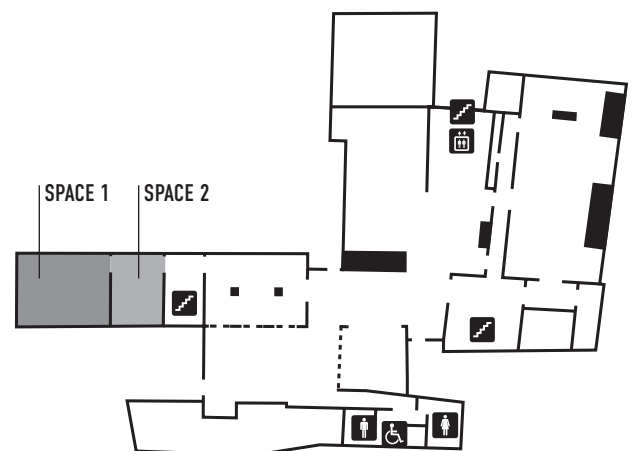
Approx. sqm: 64m²

SPACE 2

Approx. sqm: 44m²

FLOOR PLAN

GROUND FLOOR



VENUE HIRE RATES DURING GALLERY OPENING HOURS

CATEGORY ONE CORPORATE & PRIVATE HIRE

Hourly rate: \$50.00
Security Bond: \$150.00*

CATEGORY TWO COMMUNITY HIRE

Hourly rate: \$25.00
Security Bond: \$100.00*

1. All prices inclusive of GST
2. Gallery opening hours are Tuesday through Sunday 9.00am – 4.00pm
3. Base hourly rate includes:
 - Room lighting
 - Power
 - A selection of tables and chairs
 - All materials and equipment to be supplied by hirer.
4. *The Security Bond is a flat fee applied to all venue hire bookings, refundable after post event inspections are carried out and meet the terms and conditions as stated in the venue hire contract
5. Category Two rates apply to activities for the benefit of the Community which meet priority outcomes in Council's Community Strategic Plan and are run by organisations which are located within the City of Maitland and / or run by not for profit groups as defined by the Australian Taxation Office.

VENUE HIRE THE ART FACTORY



CATEGORY ONE

BASE RATE

Base rate applies to (but is not limited) to:

- individuals
- commercial operators or for commercial activities
- political organisations
- schools
- tertiary institutions
- government and profit making organisations with a capacity to pay or to receive a fee for use of the facility when delivering a service (exception of Maitland City Council)
- organized classes
- meetings
- workshops conducted by instructors / teachers who charge a fee and operate activities on income generating basis for example: - private businesses, art classes
- private individuals for parties, functions and general hire
- Local, State and Federal government agencies (exception of Maitland City Council)

CATEGORY TWO

FUNDED COMMUNITY GROUPS

Activities for the benefit of the Community which meet priority outcomes in Council's Community Strategic Plan and are run by organisations which are located within the City of Maitland and / or run by not for profit groups as defined by the Australian Taxation Office.

CATEGORY TWO

UNFUNDED COMMUNITY GROUPS AND PLAYGROUPS

Activities for the benefit of the community which meet priority outcomes in Council's Community Strategic Plan and are run by small and emerging non-profit community groups or charities (that do not receive recurrent / ongoing state or federal funding) which are located within the City of Maitland or where the activity targets more than 60% of Maitland residents (supportive document required).